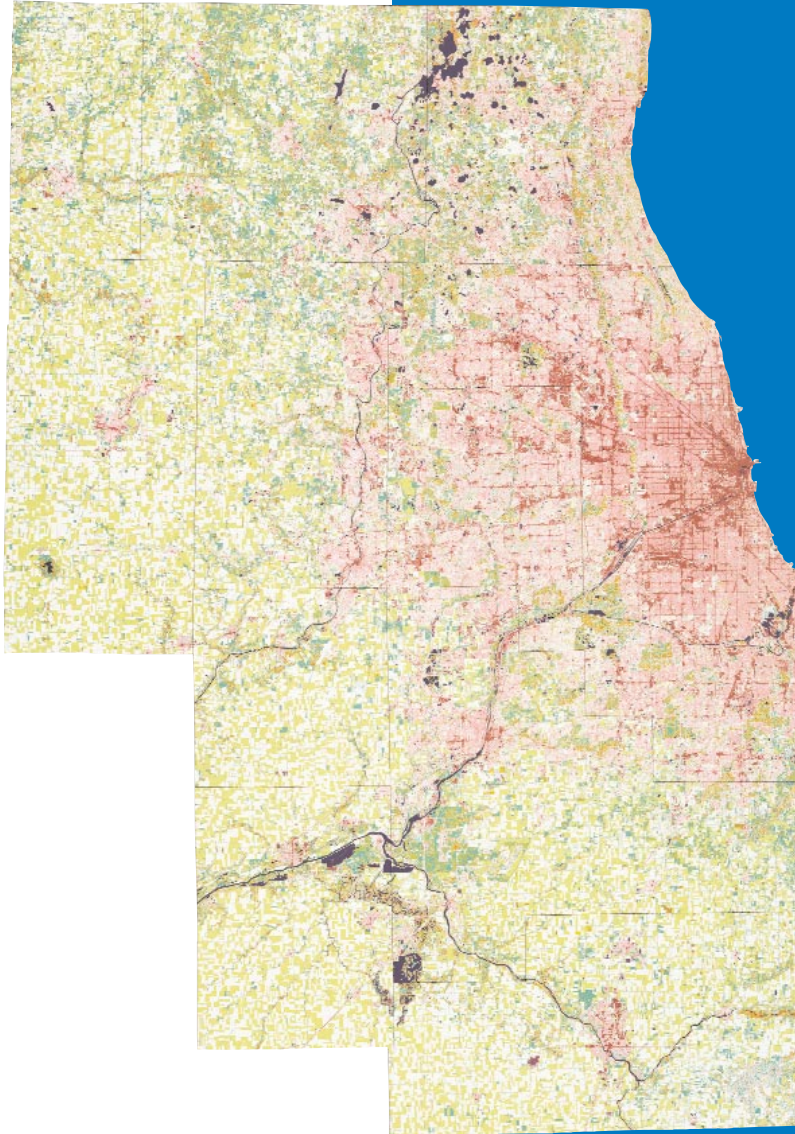
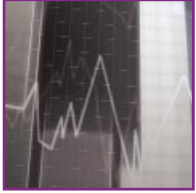




One Region. One Future.

The 2002 Metropolis Index



A MESSAGE FROM CHICAGO METROPOLIS 2020

In 2001, Chicago Metropolis 2020 published its first **Metropolis Index**, a progress report on the region's challenges and opportunities. Over 5,000 copies of that Index were distributed and widely used across the region.

The 2002 edition of the **Metropolis Index** – our annual assessment of the state of the region – updates many of last year's measurements and also adds some new measures to reflect changes in our perspective on the region's economic and social conditions.

The following pages chart how the region is doing in reaching 12 shared goals, identified last year during an extensive process involving public meetings and opinion polls. Those goals address our regional economy, transportation and land use, housing, community life, education and natural environment. This year, we conducted another public opinion survey of the region's residents. The results of this survey are highlighted in the text of the report.

Since the publication of our inaugural Index last year, the region has enjoyed some progress. Improved crime statistics signal safer neighborhoods. The number of acres of protected open space has increased.

Nonetheless, a weakening economy and continuing social inequities threaten our region's vitality as a premier place to live and work. Some of our most important measures of progress are heading in the wrong direction and are cause for serious concern.

Our region's share of national venture capital investment has declined, a trend that indicates loss of ground in creating an innovative and vibrant economy that is competitive with other regions.

- Communities enjoying the most job growth also have fewer affordable housing options for workers, requiring longer commute times and less time with families.
- Highway congestion shows no sign of improvement. Forty percent of the region's daily travel occurs in "congested" conditions.
- There are significant per pupil spending disparities among the region's public school districts.
- Student progress in meeting state educational standards continues to be a concern. School districts with a large share of low-income students tend to perform poorly on achievement tests.
- For the first time in five years, the region posted a significant increase in the percentage of children living in poverty.

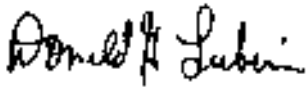
The **Metropolis Index** is intended to give residents of the region benchmarks to assess how we are doing, and to help them consider what must be done to sustain our status as a globally competitive region. Our goal is to insure that we have a region that continues to attract investment.

Chicago Metropolis 2020 believes we must think "as a region" in order to create a better life for everyone. Our public opinion survey reveals that a majority of residents of our six-county region agree that regional thinking is

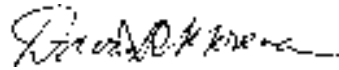
important. We must affirm that belief by creating solutions and initiating collaborative actions that work for our local communities as well as our region.

We believe the Chicago region can overcome even the most difficult challenges if our residents, businesses, and governments work together with the region's best interests in mind. This will require vigorous debate, hard choices, and new tools for working together.

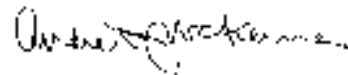
We invite your comments and any suggestions for new ways to measure progress in future editions of the **Metropolis Index**.



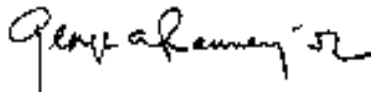
Donald G. Lubin
Chair, Chicago Metropolis 2020
Partner
Sonnenschein, Nath & Rosenthal



David R. Mosen
Chair, Index Advisory Council
President & CEO
Museum of Science & Industry



Andrew J. McKenna
Founding Chair, Chicago
Metropolis 2020
Chairman and CEO
Schwarz



George A. Ranney, Jr.
President & CEO,
Chicago Metropolis 2020
Senior Counsel, Mayer, Brown,
Rowe & Maw



Frank H. Beal
Executive Director,
Chicago Metropolis 2020

ON THE COVER

Map Source: Illinois Department of Natural Resources Office of Realty and Environmental Planning; Illinois GAP Analysis Project--Illinois Natural History Survey; Illinois State Geological Survey, Illinois Department of Agriculture, National Agriculture Statistics Service.

TABLE OF CONTENTS

ABOUT THIS REPORT

THE REGION

PAGE i

REGIONAL ECONOMY

GROWING ECONOMY

PAGE 3

Industry Sector Diversity

"Old" and "New" Industries Drive Region's Diverse Economy

Average Wage By Industry Sector

Average Annual Wages by Industry

Job Growth

Employment Falls in 2001, Breaks Nine-Year Trend

Corporate Headquarters

Number of Headquarters in the Chicago Region Continues to Decline

Number of Corporate Headquarters, 2000

INNOVATION AND ENTREPRENEURSHIP

PAGE 7

Venture Capital

Venture Capital Investment Grows in the 1990s

Chicago's Share of National Venture Dollars Falling

Technology Transfer

Technology Transfer Trails Other High Tech Regions

TRANSPORTATION AND LAND USE

EFFICIENT LAND USE

PAGE 11

Facility Planning Areas

Facility Planning Areas Expand Into Agricultural Lands and Natural Areas

EFFICIENT MOBILITY

PAGE 12

Vehicle Mobility

Highway Travel in Congestion

Vehicle Miles Traveled Per Mile of Highway Continues to Increase

Per Capita Transit Ridership

Per Capita Transit Ridership Down Slightly in 2000

Household Internet Usage

Internet Usage Among Adults Continues to Grow

International Non-Stop Destinations

Chicago's Non-Stop International Destinations Hold Steady While Houston and Atlanta Gain

HOUSING

HOUSING CHOICE AND AFFORDABILITY

PAGE 19

Rent Burden

Rent Burden Begins to Decline

Affordability Index

Housing Affordability in the Chicago Region, 2000

High Job Growth Areas Concentrate in Northwest and Western Suburbs

Jobs-Rental Housing Mismatch

Change in Employment and Total Occupied Rental Units

COMMUNITY LIFE

SHARED PROSPERITY

PAGE 25

- Household Income Distribution
 - Median- and Lower-Income Households Begin to Lose Ground
- Children in Poverty
 - Child Poverty On the Rise
- Concentration by Race
 - Region's Segregation is Among the Highest of Major Metropolitan Areas
 - Geographic Distribution of Region's Ethnic Groups
- Tax Capacity by Municipality
 - Inequities in Municipalities Ability to Pay for Public Services

SAFE NEIGHBORHOODS

PAGE 29

- Violent and Property Crime Rates
 - Violent Crime Rates Continue to Drop
 - Property Crime Rates Continue to Drop

HEALTHY PEOPLE

PAGE 30

- Health Insurance
 - Small Gain in Health Insurance Coverage Does Not Make Up Two-Year Drop
- Infant Mortality
 - Infant Mortality
- Child Immunization
 - Share of Pre-Kindergarten Students Immunized Remains Steady
- Stroke Rates
 - Region's Stroke Rates Rise

EDUCATION

SCHOOL READINESS

PAGE 35

- Early Childhood Education Programs
 - Child Care, Head Start and Pre-K Slots Grow Slowly

EDUCATIONAL ACHIEVEMENT

PAGE 36

- Education Spending
 - Education Expenditures Unequal in the Region
 - Higher Spending School Districts Attract More Teachers with Advanced Degrees
- Student Achievement
 - Seventh and Eighth Grade Students' Academic Performance
 - Eleventh Grade Students' Academic Performance
 - City/Suburban Schools with Higher Poverty Levels Have Lower Scores
- Graduation Rate
 - Districts with More Poor Students Have Lower Graduation Rates
- Advanced Degrees
 - Associate Degree Achievement Gaps Persist

NATURAL ENVIRONMENT

ENVIRONMENTAL STEWARDSHIP

PAGE 45

- Protected Open Space Added, 2000
 - Region Adds Protected Open Space
- Air Quality
 - Ozone Pollution Declines
- Water Quality
 - Stream Water Quality Improves

APPENDIX ONE

PAGE 50

APPENDIX TWO

PAGE 56

THE REGION

The 2002 *Metropolis Index* identifies and measures social and economic conditions in the region. The Index contains 31 indicators that measure the region's progress in meeting shared goals. It is a description of "how we are doing" as a region.

The principal unit of geography measured in the Index is the six-county Chicago region that includes Cook, DuPage, Kane, Lake, McHenry, and Will Counties. Some progress measures cover the federally designated Primary Metropolitan Statistical Area (PMSA, nine counties) or Consolidated Metropolitan Statistical Area (CMSA, 13 counties including parts of Wisconsin and Indiana).

REGIONAL GOALS

Twelve shared goals for the Chicago region are identified throughout this report. They were developed during 1999-2000 by more than 500 residents who came together in a series of community forums to discuss and debate the values we share as a region. The goals developed during the community forums were further tested and refined through a statistically significant survey of residents of the six-county region.

SURVEY

A similar survey was conducted during November 2001 that measured changes in opinions about the 12 shared goals among residents of the region.

PROGRESS MEASURES

This report contains 31 indicators identified to track progress toward our shared goals. Generally, the data used to construct each measure report on conditions through 2000, the most recent complete year for which data are available.

A team of local public policy experts developed the progress measures, and the data were drawn from a variety of publicly available sources from the public sector, private sector, and non-profit organizations.

Progress measures were selected because they: (1) reflect fundamental progress toward meeting the goals for the Chicago region, (2) measure the fundamentals of the region, and (3) are measurable on a regular basis.

The 12 goals and 31 progress measures presented in this report are a baseline for the region to measure itself over time. Some of the progress measures compare our performance to national norms, while others describe how our region itself is doing over time. Some progress measures make intra-regional comparisons to illustrate the richness of differences and the risks of looking no further than a regional average. Other measures compare the Chicago region to other metropolitan regions for a point in time.

Collectively, the goals and progress measures describe what we want to achieve as a region, and how well we are doing to get there.

This report is also available on-line at www.chicagometropolis2020.org.

ABOUT THE SIX-COUNTY CHICAGO REGION 2000-2001

Population:	8.09 million
Jobs:	4.1 million *
Unemployment Rate:	5.6% (Nov. 2001) *
Age Distribution:	
(0-19)	30%
(20-34)	22%
(35-49)	23%
(50-64)	14%
(65+)	11%
Ethnic and Racial Breakdown:	
White (non-Hispanic)	57%
African American	19%
Hispanic or Latino	17%
Asian-American	5%
Population of two or more races	1%
Gross Regional Product:	\$319 billion
Educational Attainment:	
High School degree	81%
College degree	31%
Graduate degree	12%
Median Household Income, 2000:	\$51,232
Area (land/water):	3,749 sq. mi.

* Indicates figure corresponds to the nine county Chicago PMSA.